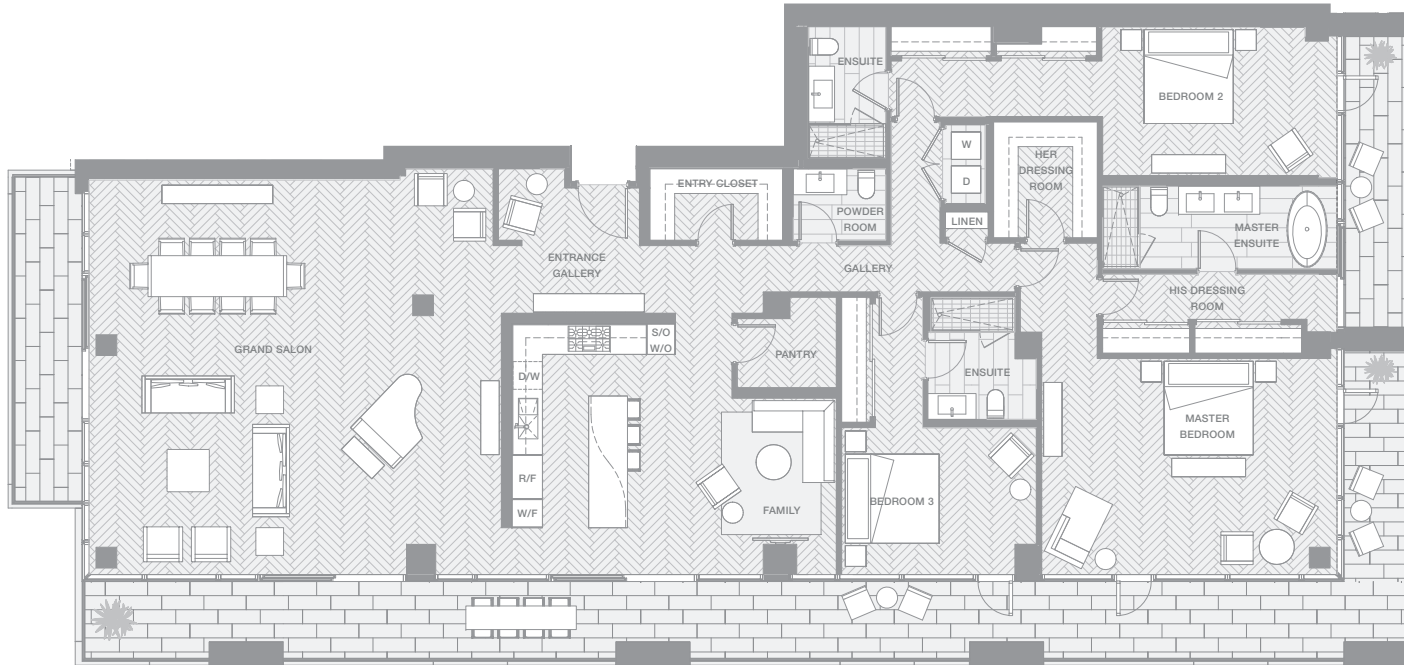


# VANCOUVER HOUSE

# ESTATE 5601



### THREE BEDROOM & FAMILY ROOM

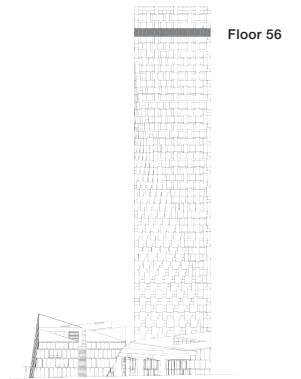
**TOTAL LIVING 3949 SQ FT**

Indoor Living 3050 sq ft

Outdoor Living 899 sq ft

- Spanning entire south façade with unobstructed views from False Creek to English Bay
- Boffi chef's kitchen featuring Miele appliances and custom BIG-designed Corian island
- Master bedroom with marble clad five-piece ensuite and double dressing rooms
- Guest bedrooms with deluxe ensuites

Price Upon Request - Off Market Sale



westbank **BIG**

THERE ARE NO REPRESENTATIONS OR WARRANTIES HEREIN, MADE BY THE DEVELOPER, ITS AGENTS OR EMPLOYEES, OR ANY OTHER PERSON ON BEHALF OF THE DEVELOPER, OTHER THAN THOSE CONTAINED IN A CONTRACT OF PURCHASE AND SALE BETWEEN A PURCHASER AND THE DEVELOPER AND IN THE DISCLOSURE STATEMENT FOR THE DEVELOPMENT TO THE EXTENT MANDATED BY LAW. IN PARTICULAR, THE PURCHASER ACKNOWLEDGES AND AGREES THAT THE MATERIALS, SPECIFICATIONS, DETAILS, DIMENSIONS, LAYOUT AND FLOORPLANS SET OUT HEREIN OR OTHERWISE VIEWED BY THE PURCHASER ARE APPROXIMATE AND SUBJECT TO CHANGE WITHOUT NOTICE.